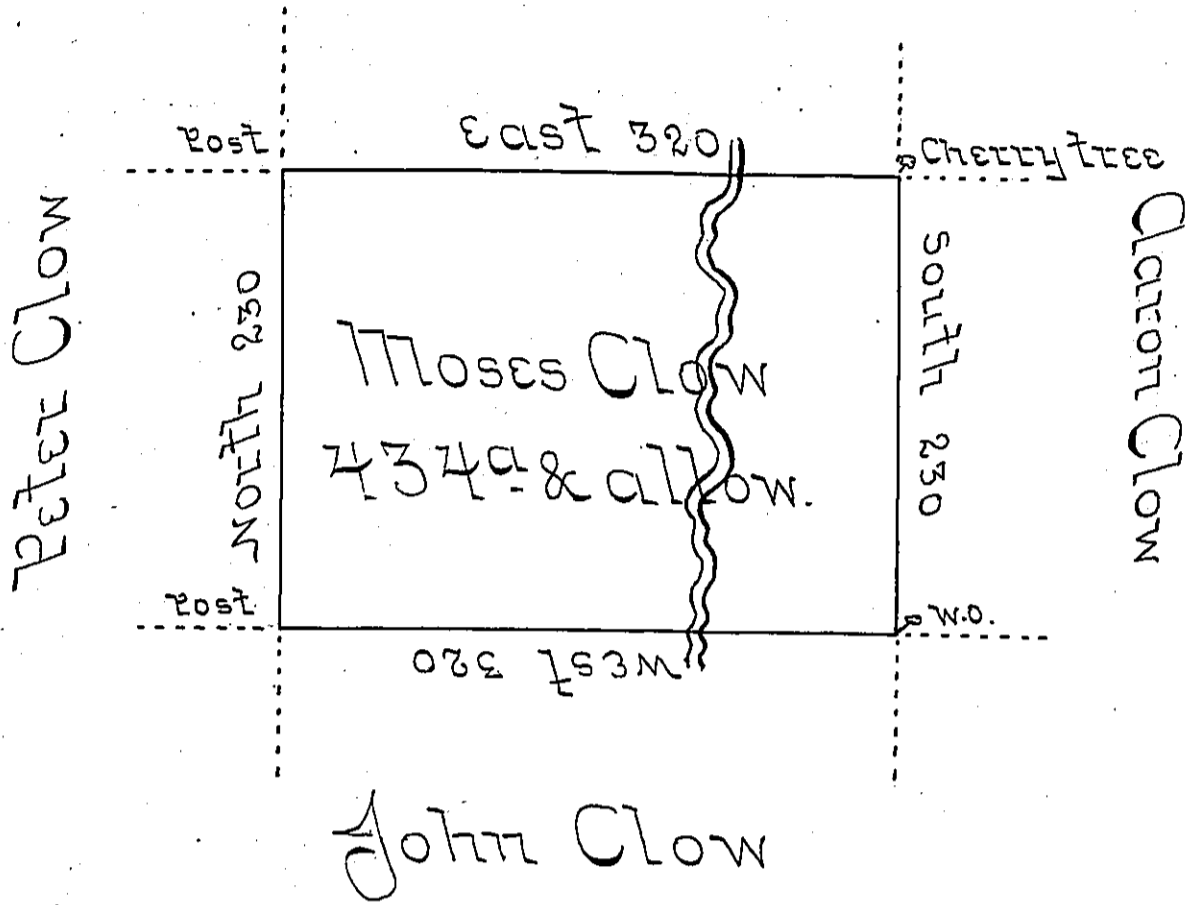


Samuel Lee



Situate in district No 7 North & West of Ohio & Allegheny Rivers & Conewango Creek in Allegheny County - Containing four hundred & thirty four Acres & Allowance of six Percent for Roads &c^a Surveyed 6th September 1794 to Moses Clow on Warrant of 12th August 1793. -

Alexander McDowell DS

Daniel Brodhead Esq^r
Surveyor General

IN TESTIMONY that the above is a copy of the original remaining on file in the Department of Internal Affairs of Pennsylvania, made conformably to an Act of Assembly approved the 16th day of February, 1833, I have hereunto set my Hand and caused the Seal of said Department to be affixed at Harrisburg, this twenty fourth day of May 1904.

Loach & Brown
Secretary of Internal Affairs.